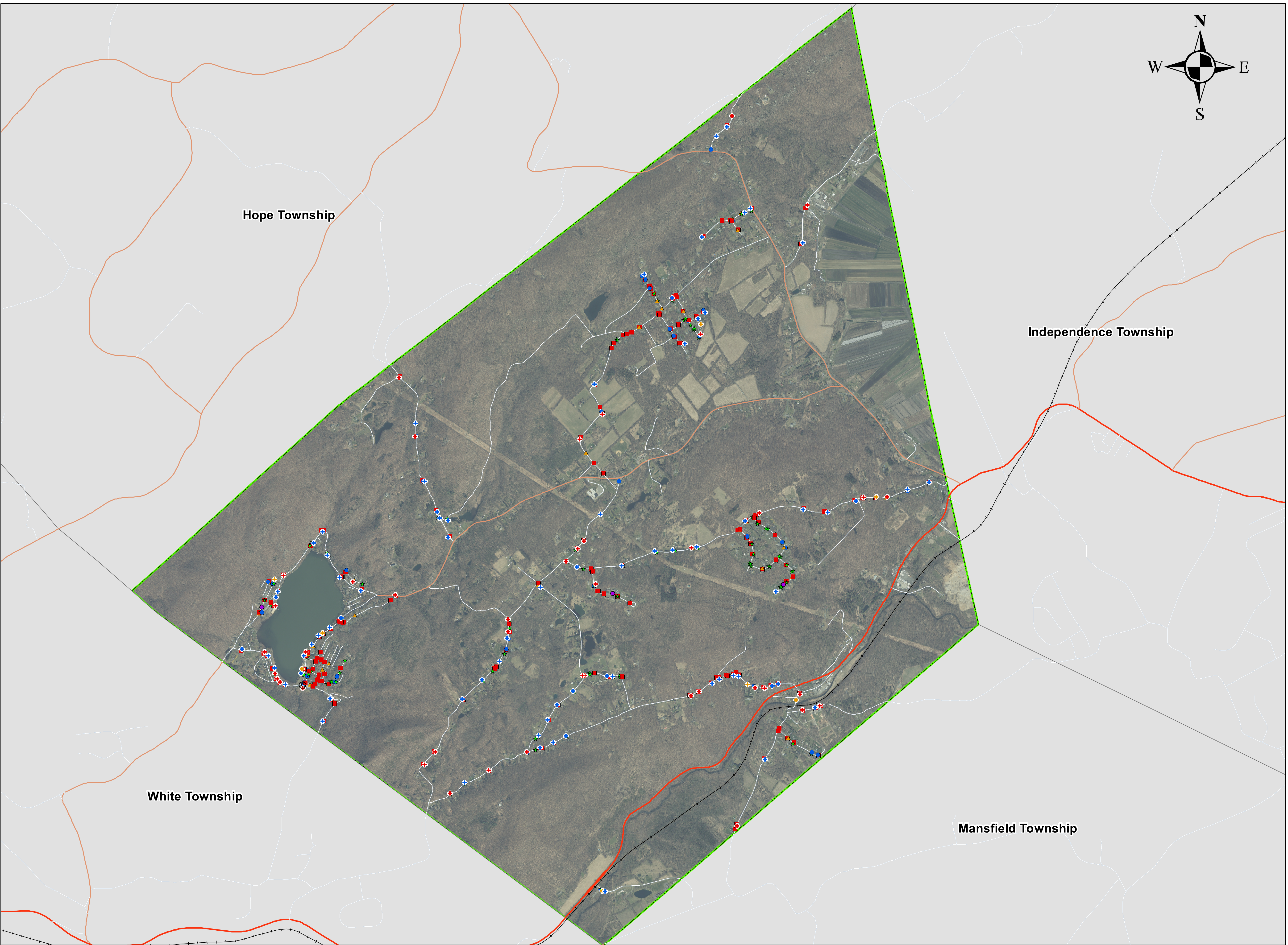
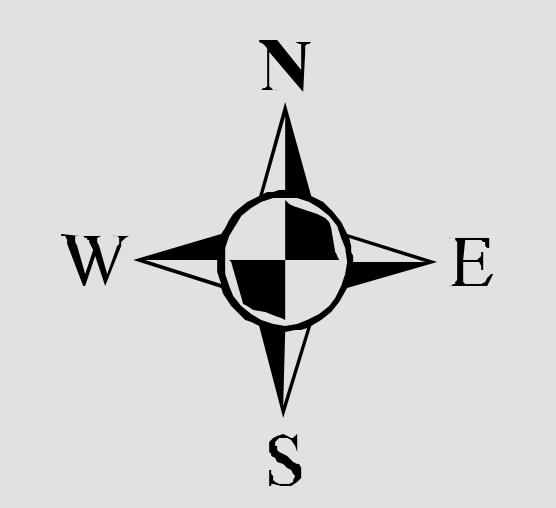


Liberty Township
Warren County
New Jersey



Legend

Outfall Condition

- + Good
- + Fair
- + Poor

Inlet Condition

- ★ Good
- Bad Structure
- Bad Debris
- ▲ Poor Both

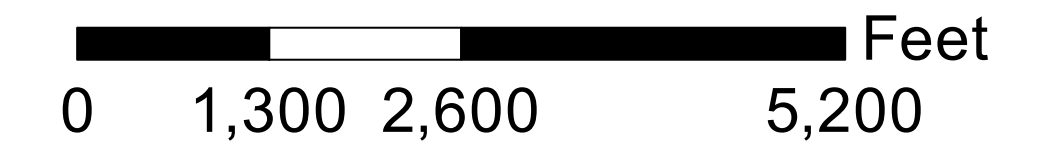
Other Features

- ▬ Primary Limited Access or Interstate
- ▬ Primary US and State Highways
- ▬ Secondary State and County Highway
- ▬ Local or Rural Road
- ▬ Railroads
- ▬ Rivers & Streams
- Waterbodies
- Manholes
- Stormwater Manufactured Treatment Devices

Boundaries

- Liberty Township Border

1 inch = 1,300 feet



Coordinate System: NAD 1983 State Plane
New Jersey FIPS 2900 Feet
Projection: Transverse Mercator
Datum: North America 1983
Units: US Feet
Date: August 2024

**2024 Stormwater Facilities
Overview Map**